

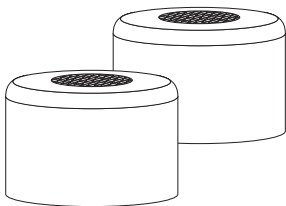
STOVETOP
FIRESTOP[®]
 ACCESSORIES

For more information and video demonstrations,
 visit www.stfs.com

675-133, Rev A, 02-2016

INCLUDED IN THIS BAG

- ① Rangehood Décor Cover,
 Stainless Steel (x2)

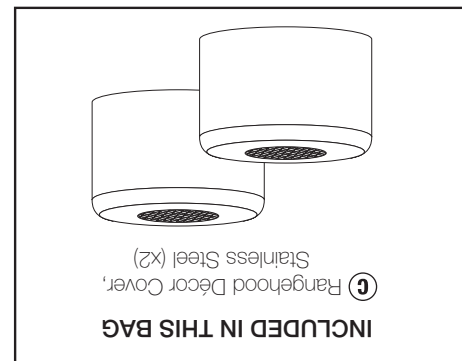


675-129

**STOVETOP FIRESTOP
 RANGEHOOD
 DÉCOR COVER**



**STOVETOP FIRESTOP
 RANGEHOOD
 DÉCOR COVER**



- ① Rangehood Décor Cover,
 Stainless Steel (x2)

INCLUDED IN THIS BAG

For more information and video demonstrations,
 visit www.stfs.com

STOVETOP
FIRESTOP[®]
 ACCESSORIES

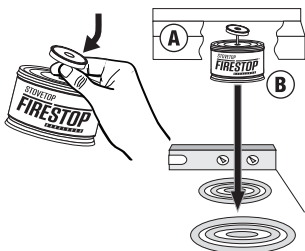
675-133, Rev A, 02-2016

© 2016, WilliamsRDM, Inc. All rights reserved. Stovetop Firestop and the Stovetop Firestop logo are either registered trademarks or trademarks of WilliamsRDM in the United States and/or other countries. Patent information at www.stfs.com/patents. 03-2016

Installation Instructions

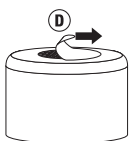
Rangehood Décor Cover

Neglecting to follow these instructions could negatively affect product performance.

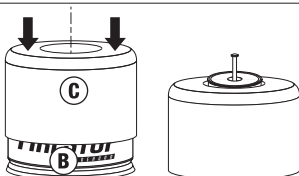


- 1** Carefully remove existing product (B) by grasping the unit by the mounting post and twist to disengage the magnet.

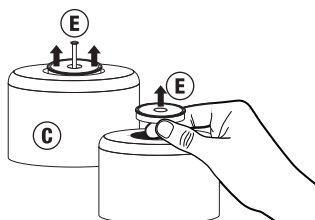
Review the product label.



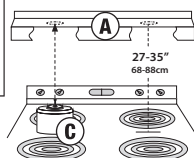
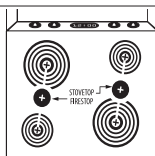
- 2** Remove STFS Décor Cover (C) from its packaging. Read the notice, then peel off the label (D) covering the opening on top of the cover.



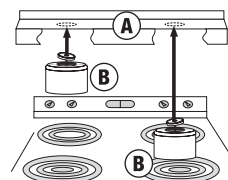
- 3** Place one cover (C) over the top of the magnet side of the Rangehood canister.



- 4** With the magnet passing through the opening in the top of the cover (C), hold the canister by the magnet and mounting post (E).



- 5** Position each canister with its cover (C) between the front and back burners. Lift the canister straight up into the range hood.



- 6** The magnet will "stick" (B) to the range hood (A). Repeat with second canister and cover.

Installation is complete.