

The Next Evolution in StoveTop FireStop®

# STOVETOP FIRESTOP PLUS SENSOR USER MANUAL



AUTOMATIC FIRE SUPPRESSION FOR GREASE FIRES  
ON INDOOR RESIDENTIAL STOVE TOPS  
(CLASS K)

[www.STFS.com](http://www.STFS.com)

**Read this user manual carefully prior to installation**

## ⚠ WARNING

- Not intended for cooking with more than 1" oil depth before food is added.
- Not recommended for gas stoves; powder may extinguish burner flame on a gas stove top
- If safe, turn burner OFF immediately after activation.
- Reignition is possible.
- When suppressing powder comes in contact with fire, it may briefly flare and/or cause grease to splash. This is a normal and temporary reaction.
- This product may not suppress all stove top fires.

## ⚠ CAUTION

- Keep away from children.
- Avoid exposure to suppressing powder if you wear contacts, or have a respiratory illness or skin allergies.
- Contents may be harmful if swallowed.
- Suppressing powder is non-toxic but could cause skin irritation. In case of contact with powder, flush from affected area with water.
- If irritation persists, contact a physician immediately.
- Discard product after activation.
- Discard product if dropped or damaged.
- Do not clean unit.

## NOTICE

- **Failure to remove or replace by the "remove or replace before" date, as shown on the product label, could diminish the effectiveness of the product.**
- Primary activation method is through electronic sensors.
- At time of activation, a loud "POP" will occur, followed by 3 long, repeating tones. This is normal and meant to alert occupants, if present.
- Device is equipped with a fuse that works as a secondary activation method in case of dead batteries.
- Replace batteries as required to ensure optimum performance. Do not mix old and new batteries. It is recommended that you not mix brands.

## FIRE SAFETY

- Unattended cooking is the leading cause of fires in the kitchen. Many injuries occur when occupants attempt to fight the fire themselves.
- Never leave anything cooking on the stove top unattended! If you have to leave the kitchen—even for a short time—turn off the stove.
- Never leave home or fall asleep while you are cooking.
- Never pick up a flaming pan. You may be burned, or if the pan is dropped, flames may quickly spread to other flammable areas.
- Never use water to fight a grease fire! A violent explosion may result. Wet dishcloths or towels are also dangerous.
- Always follow National Fire Protection Association (NFPA) guidelines for proper cooking safety. Visit [www.nfpa.org](http://www.nfpa.org).

## MANUFACTURERS INFO

Designed & Manufactured  
by WilliamsRDM in Texas

**Designed solely for suppressing  
stove top grease fires in  
indoor residential kitchens using no more  
than 1" of oil before food is added.**

**Contents:** Potassium Bicarbonate

For storage and disposal information,  
or to learn more about StoveTop FireStop,  
please visit our website at [www.STFS.com](http://www.STFS.com),  
or call 1-888-616-7976.

## FCC NOTICE

This device complies with Part 15 of the FCC Rules. Operation is subject to the following two conditions: (1) this device may not cause harmful interference, and (2) this device must accept any interference received, including interference that may cause undesired operation.

## LIMITED WARRANTY

WilliamsRDM, Inc. ("WRDM") warrants this StoveTop FireStop® product against defects in material or workmanship for the time periods and under the terms set forth below. Pursuant to this Limited Warranty, WRDM will, at its option, (i) repair the product using new or refurbished parts or (ii) replace the product with a new or refurbished product. For purposes of this Limited Warranty, "refurbished" means a product or part that has been returned to its original specifications. **In the event of a defect, these are your exclusive remedies.**

WRDM warrants to the original retail purchaser all WRDM products for a period of one (1) year against defective material and faulty workmanship. Any unit found to be defective during the warranty period will be repaired if possible, or replaced free of charge upon the buyer's prepaid return of the defective unit—only after receipt of an official Return Material Authorization (RMA) number. Proof of retail purchase is required. This warranty gives the buyer specific legal rights which may vary by state (or country).

**THE FORGOING WARRANTY IS MADE IN LIEU OF ALL OTHER WARRANTIES WITH RESPECT TO THIS PRODUCT, INCLUDING**

**ANY IMPLIED WARRANTY OF MERCHANTABILITY OR FITNESS FOR A PARTICULAR PURPOSE—WHICH ARE HEREBY DISCLAIMED. THERE ARE NO IMPLIED WARRANTIES WHICH EXTEND BEYOND THE DESCRIPTION ON THE FACE HEREOF. NO PERSON IS AUTHORIZED TO GIVE ANY OTHER WARRANTY, OR TO ASSUME FOR WRDM ANY OTHER LIABILITY IN CONNECTION WITH THE SALE OR INSTALLATION OF ITS PRODUCTS. REPLACEMENT OF THE PRODUCT WILL BE THE SOLE REMEDY WITH RESPECT TO ANY LOSS OR DAMAGE TO PROPERTY. BUYER IS NOT RELYING ON SELLER'S JUDGMENT REGARDING BUYER'S PARTICULAR REQUIREMENTS AND BUYER HAS HAD AN OPPORTUNITY TO INSPECT THE PRODUCT TO BUYER'S SATISFACTION. UNAUTHORIZED SERVICE OF ANY KIND INVALIDATES ALL WARRANTY PROVISIONS.**

This Limited Warranty covers only the hardware components packaged with this product. It does not cover technical assistance for hardware. Any parts or product replaced under this Limited Warranty will become the property of WRDM.

**LIMITATION ON DAMAGES: WRDM SHALL NOT BE LIABLE FOR**

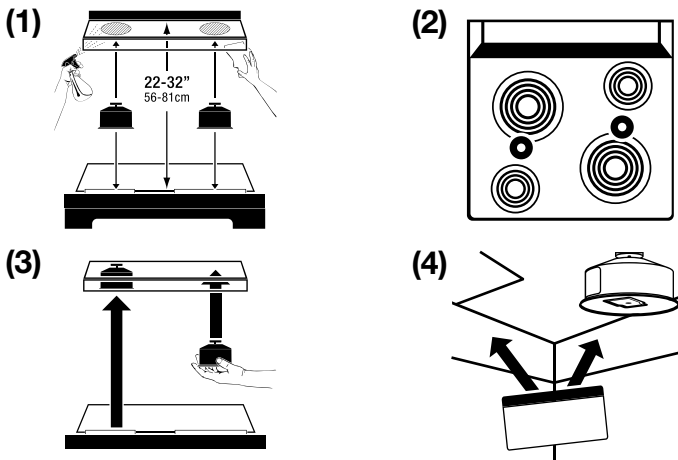
**ANY INCIDENTAL OR CONSEQUENTIAL DAMAGES, INCLUDING BUT NOT LIMITED TO ANY SUCH DAMAGES FOR ANY BREACH OF ANY EXPRESS OR IMPLIED WARRANTY ON THIS PRODUCT.**

Instructions: To obtain warranty service, you must deliver the product, freight prepaid, in either its original packaging, or packaging affording an equal degree of protection, to WRDM's specified manufacturing facility.

This Limited Warranty only covers product issues caused by defects in material or workmanship during ordinary consumer use; it does not cover product issues caused by any other reason, including but not limited to product issues due to commercial use, acts of God, misuse, limitations of technology, or modification of or to any part of the WRDM product. This Limited Warranty is invalid if either the factory-applied work order number or date code has been altered or removed from the product. This Limited Warranty is valid only in the United States.

**For StoveTop FireStop customer service:  
go to [www.STFS.com](http://www.STFS.com) or call 1-888-616-7976.**

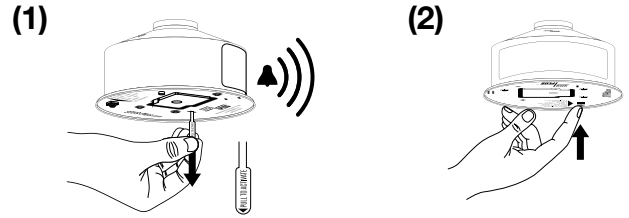
## INSTALLATION



- 1) Must have 22-32" (56-81 cm) between surface of cooktop and mounting point in range hood. Clean and dry areas in range hood where both magnets will attach.
- 2) Position canisters in range hood at the midpoint between the center of front and back burners on each side.
- 3) Raise canisters to the spot directly above in range hood.
- 4) Place the enclosed decal where it can be seen in the ventilation hood.

**If the magnet does not attach, go to [www.STFS.com](http://www.STFS.com) to order an alternative mounting kit.**

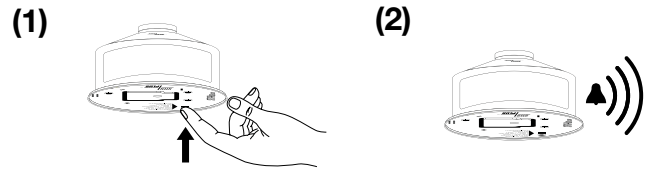
## ACTIVATION



- 1) Pull out the red tab to activate the product. The product should emit three (3) short tones, one time.
- 2) If no sound is heard, proceed to TESTING section and/or BATTERY REPLACEMENT sections.

**See chart below for explanation of additional alerts.**

## TESTING



- 1) To test the device, hold Test button for more than 3 seconds until a tone is heard.
- 2) When the button is released, the tone will stop.

	SOUND	MEANING	CONDITION	CYCLE	ACTION
ALERTS	— — — 3 long tones	Device has detected a fire and deployed suppression powder	Alarm	Repeats every 1.5 seconds until batteries run out or are removed	Leave dwelling immediately, then call 911
	• • 1 short tone	Low Battery	Low Battery	Repeats every 60 seconds until batteries run out or are replaced.	Replace old batteries with two (2) new, 1.5V alkaline, N-cell batteries
	•• •• 2 short tones	Device has detected an error within the sensor board	Fault	Repeats every 60 seconds until batteries run out	Go to STFS Plus Sensor Troubleshooting Section at <a href="http://www.STFS.com">www.STFS.com</a>
TESTING	••• 3 short tones	Initial activation by pulling tab, or batteries have been replaced	Power On	Once when tab is pulled, and each time batteries are replaced.	Device is powered on and working properly
	———— 1 continuous tone	Hold down self-test button for more than 3 seconds	Self Test	Continuous until button release	Device has self-tested, and is working properly

## BATTERY REPLACEMENT

- 1) Use #2 Phillips head screw driver to unscrew the three (3) small screws from the sensor board.
- 2) Remove the sensor board, taking care not to damage or disconnect the wires.
- 3) Properly dispose of the existing batteries.
- 4) Replace with two (2) new, 1.5V alkaline N-cell, batteries. Do not mix new and old batteries.
- 5) Fold the wires back into place, taking care not to damage the wires.
- 6) Reattach the sensor board with the three (3) small screws, and reinstall per installation instructions.

**Do not tamper with any sensors, or any other parts of the product or you risk device malfunction and voiding manufacturer's warranty.**

